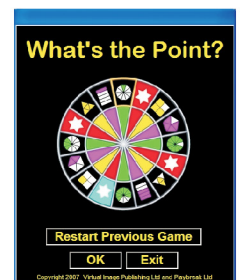


What's the Point?

An award-winning new game from Playbreak!!!

Winner of The Good Toy Award 2007
Virtual Image has developed the new interactive version of the game.



Summary of the Rules

Each player receives seven cards from the pack. The cards show a decimal, a percentage, a fraction or a partially shaded set of tiles. Players take turns to spin the spinner. The shape indicated by the spinner determines what the player can do. For example, if the shape is half shaded, the player can discard cards showing 0.5, 50%, $\frac{1}{2}$ or the half shaded tile card. If the shape is a star, the player can discard any card if it is on a red background, but must pick up another card, if it is on a blue background. The first player to discard all their cards is the winner.

What's the Point? is fantastic value at the following prices (ex.VAT):

extended site licence	- £300
unlimited user site licence	- £150
90-119 user licence	- £125
60-89 user licence	- £100
30-59 user licence	- £75
2-29 user licence	- £50
single user licence	- £25

Additional disks are available for home use by pupils at schools with multiple user licences for £5.88 (inc.VAT) each.

Please note that we can only process orders for these disks if they are placed by the school for batches of at least 10.



(Extended licences include home use by teachers and pupils.)