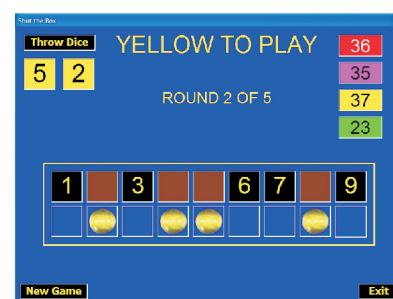


Shut the Box



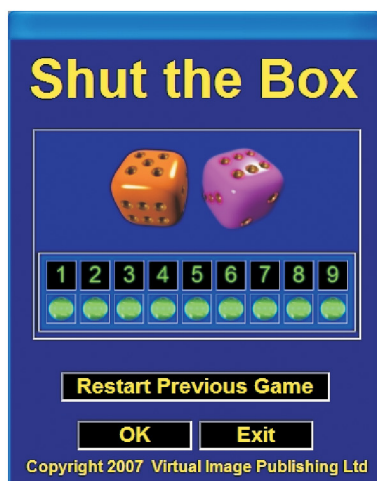
NEW from Virtual Image!!!

Shut the Box is a new software version of the traditional dice arithmetic game



Summary of the Rules

The playing board consists of the numbers 1 to 9. To 'Shut the Box' a player must place a counter on all nine numbers. Players take turns to throw two dice. The player can then either take the scores on each die separately or take the sum of the two scores. For instance, if the dice show a 3 and a 4, the player can put a counter on the number 3 and a counter on the number 4, alternatively, the player can place a counter on the number 7. The player continues to throw the dice until no valid move is possible. The dice then pass to the next player. The player's score points equal to each number that they cover. After five rounds the player with the highest score wins. The game is designed for 2 - 4 players or one player against the computer.



Shut the Box is great value at the following prices (ex.VAT):

extended site licence	- £240
unlimited user site licence	- £120
90-119 user licence	- £100
60-89 user licence	- £80
30-59 user licence	- £60
2-29 user licence	- £40
single user licence	- £20

Additional disks are available for home use by pupils at schools with multiple user licences for £5.88 (inc.VAT) each.

Please note that we can only process orders for these disks if they are placed by the school for batches of at least 10.

(Extended licences include home use by teachers and pupils.)